

# AUTISM

## Acceptance Month

Timberland Regional  
**LIBRARY**

April 2023  
**eNewsletter**  
#TRLCelebrations

[Plan Your Visit](#)

[Events Calendar](#)

[Expanded Access Hours](#)

[It's Your Lucky Day](#)

## West Olympia Grand Reopening Set for May 6



You're invited to celebrate the Grand Reopening of the 29th Timberland Regional Library in West Olympia!

**Saturday, May 6**  
**11 am – 1 pm**

Join Us for:  
Ribbon Cutting Ceremony  
Guest Speakers  
Refreshments  
Giveaways

[West Olympia Library](#) is located in Capital Mall just off Hwy 101

Now open daily 10 am – 6 pm



## MOVING FORWARD TOGETHER

*Mental Health and Resilience in the Capital Region*

Learn about our rural communities' mental and social-emotional health, and opportunities for STEM education and family-wage careers.

**Thursday, May 25 • 9 am – Noon • Online Zoom Event**

### About This Zoom Event

Gain insights about current social-emotional and mental health issues in Grays Harbor, Lewis, Mason, Pacific, and Thurston Counties. In addition, learn about community organizations that offer resources to address these issues and steps families and individuals can take to learn about and prepare for rewarding careers in STEM occupations.

### Highlights

Keynote Address by Thurston County Commissioner **Carolina Mejia**, District 1  
Panel Discussion with Public Health Experts  
Breakout Sessions  
Audience Q & A

### Registration

Free public event on Zoom.

[Event Details](#)

[Register Here](#)



## Teen Events

Teen events are specially curated to provide a fun, engaging, and safe space for teenagers to come together and connect. From book clubs and writing workshops to art sessions, there is something for everyone. Staff are committed to creating inclusive and diverse events that cater to various interests and hobbies. Libraries offer welcoming, vibrant spaces for teens to explore, learn, and socialize.

- [Grays Harbor County Events](#)
- [Lewis County Events](#)
- [Mason County Events](#)
- [Pacific County Events](#)
- [Thurston County Events](#)

[View All Teen Events](#)





## Home Access to ABCmouse.com

Looking for an engaging and educational online resource for your child? Look no further than ABCmouse.com which offers over 10,000 interactive activities and lessons, including reading, math, science, and art for children's ages 2 – 8. Available in English and Spanish, ABCmouse.com is designed to foster a love of learning in a safe and engaging online environment. Available on computers, tablets, and smartphones with your library card.

Be sure to set your account on a desktop before installing the ABCmouse App. [Android](#) | [iOS](#)

Visit ABCmouse.com



## Elma Location Now Offers Expanded Access Hours

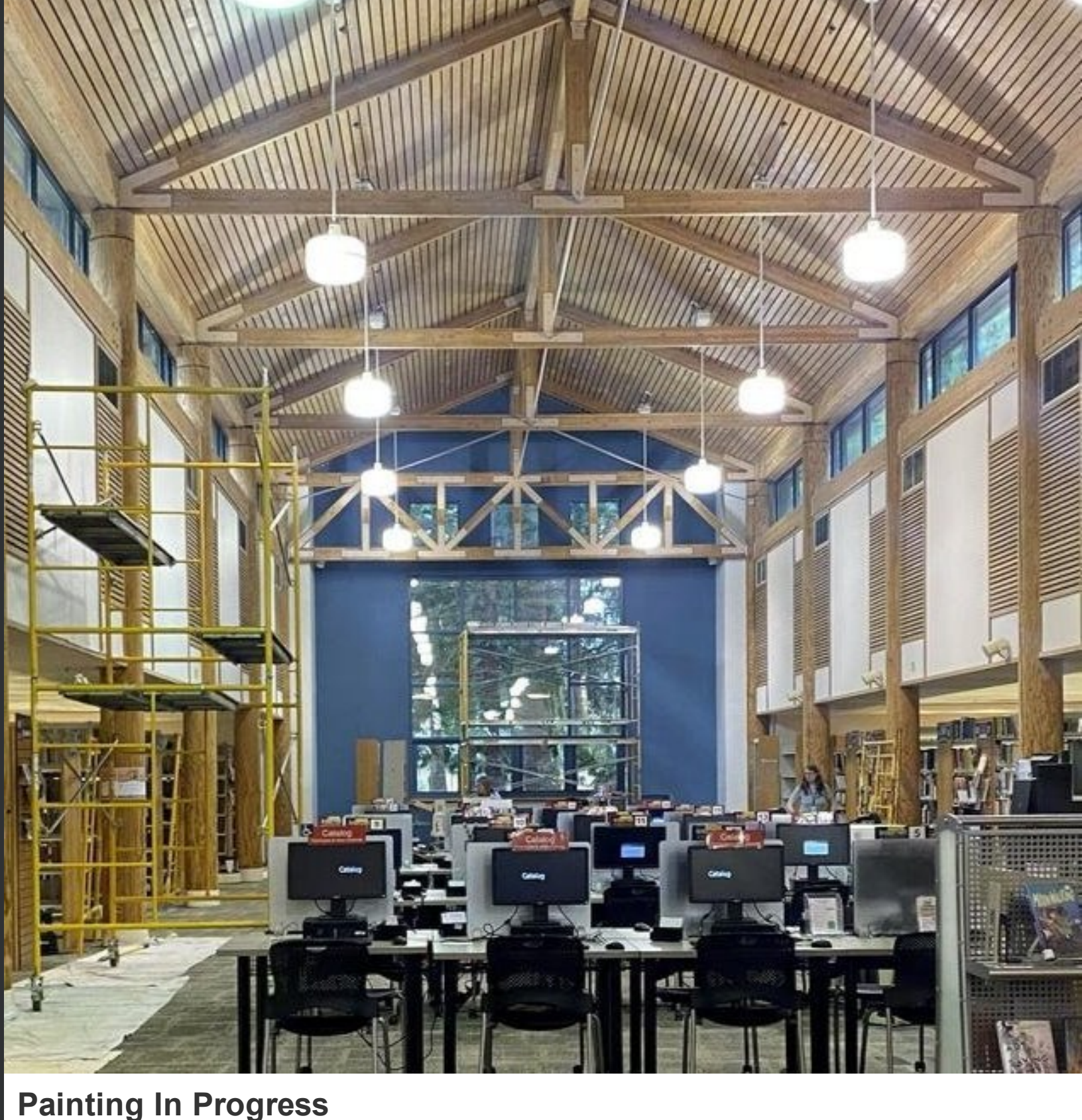
Library Services on your Schedule.

Recently [Elma Library](#) added EAH hours. EAH access goes beyond your home library; it includes all EAH locations. On your next library visit, ask staff about signing up today!

Available at 6 locations:

- [Elma](#)
- [Hoodsport](#)
- [McCleary](#)
- [Naselle](#)
- [Ocean Park](#)
- [Packwood](#)

EAH Information



## Painting In Progress

The [Lacey Library](#) closed on Monday, April 17 for interior painting, and will reopen on Monday, April 24.

We sincerely appreciate the City of Lacey's care of the Library. As the building's owners, they make sure the facility is clean, safe, and always looks fantastic.

Lacey Facebook



## Ilwaco Refresh!

On April 1st, the work to revitalize and modernize the Ilwaco Library officially began! Updates will include enhanced children, teen, and adult spaces: new furniture, circulation desk, flooring, and paint.

Stay tuned for more updates!

# DO YOU KNOW A STELLAR LIBRARY WORKER?

Submit a star and  
let everyone know  
why your library  
worker shines!

#NLWD23 ALA APA

## NATIONAL LIBRARY WORKERS DAY APRIL 25, 2023

To show appreciation for TRL staff and the work they do throughout the year, members of the community are invited to "Submit a Star" by providing a testimonial about a favorite library employee on the NLWD website.

Submit a Star!



# Library Giving Day

[TRL.org/donate](https://www.trl.org/donate)

## Thank you for your Support!

Thank you to everyone who participated in Library Giving Day! **We received \$11,676 in donations!**

Your kindness and generosity is deeply appreciated, and we are grateful for your commitment to TRL's mission.

[Request a  
Grab Bag!](#)

[Reserve a  
Meeting Room](#)

[Access  
Mobile Printing](#)

[Check out Library  
of Things](#)

Timberland Regional Library (TRL) district provides for the entertainment, information, and lifelong learning needs of Grays Harbor, Lewis, Mason, Pacific, and Thurston county residents. The library system is funded mainly by local property taxes, timber tax, fundraising efforts of TRL Friends of the Library, and generous donations by individual supporters.

For more information visit [TRL.org](https://www.trl.org)



[View previous eNewsletters](#)

[Manage](#) your preferences | [Opt Out](#) using TrueRemove™  
Got this as a forward? [Sign up](#) to receive our future emails.  
View this email [online](#).

415 Tumwater Blvd. SW | Tumwater, WA 98501 US

This email was sent to .  
*To continue receiving our emails, add us to your address book.*

[Subscribe](#) to our email list.